

**RADIATION SAFETY OFFICE
UNIVERSITY OF MARYLAND**

**RADIATION SAFETY MANUAL
UNIVERSITY OF MARYLAND
College Park, Maryland**

Revised May 2001

TABLE OF CONTENTS

FORWARD	v
1. ADMINISTRATIVE ORGANIZATION	1
1.1. President	1
1.2. Radiation Safety Committee (RSC)	2
1.3. Deans, Directors, and Department Chairpersons	2
1.4. Radiation Safety Office (RSO)	3
1.5. Radiation Safety Officer	3
1.6. Radioactive Material and Radiation Equipment User	3
1.6.1. Principal Investigator	3
1.6.2. Authorized User	4
1.6.3. Individual User	4
1.6.4. Responsibilities of Users	5
2. RADIATION EXPOSURE CONTROL	7
2.1. ALARA	7
2.2. Basic Radiation Protection Standards	7
2.2.1. Occupational Dose Limits	7
2.2.2. Internal Exposure	8
2.2.3. Occupational Dose to Fertile Women	8
2.2.4. Occupational Dose to Minors	8
2.2.5. Exposure to Non-occupational Exposed Personnel (General Public)	8
2.2.6. Surface Contamination	9
2.3. Personnel Monitoring (Dosimetry)	9
2.3.1. Dosimeter	10
2.3.2. Thermoluminescent Dosimeters (TLD)....	10
2.3.3. Self Reading Dosimeters	11
2.3.4. Issuing Dosimetry	11
2.3.4.1. Temporary Personnel from Other Facilities	11
2.3.4.2. University of Maryland Personnel Visiting Other Facilities	11
2.3.5. Exposure History	12
2.3.5.1. Lost or Damaged Dosimeters	12
2.3.6. Bioassay Program	12

3. RADIOACTIVE MATERIALS POLICY AND PROCEDURE	13
3.1. Personnel Authorization	13
3.1.1. Principal Investigator (PI)	13
3.1.2. Under 18 Years of Age	13
3.1.3. Undergraduate Students	13
3.1.4. Graduate Students	13
3.1.5. Post Doctoral Faculty or Research Personnel and Classified Employees	14
3.1.6. Non-University Personnel	14
3.1.7. Casual Visitors	14
3.1.8. Student Programs	14
3.2. Authorization Procedures	14
3.2.1. Application for Possession and Use of Radioactive Materials	14
3.2.2. Training and Experience of Radioactive Material and Radiation Equipment Users ...	15
3.2.3. Processing the Application	15
3.2.4. Renewal of Authorization	15
3.3. Possession, Receipt and Inventory of Radioactive Materials	17
3.3.1. Ordering Radioactive Materials	17
3.3.2. Receipt of Radioactive Materials	17
3.3.3. Inventory Control	17
3.3.4. Transfer of Possession	18
3.4. Use of Materials in Spaces not Listed in the User's Authorization . On and Off Campus	18
3.5. Transportation of Radioactive Materials	18
3.5.1. Hand Transport	18
3.5.2. Vehicle Transport	19
3.5.3. Transport Between Authorized Areas	19
3.6. Storage	20
3.6.1. Unsealed Sources of Radiation	20
3.6.2. Sealed Sources of Radiation	20
3.6.3. Special Cases	20
3.6.4. Radioactive Waste	20
3.7. Signs, Labels and Signals	21
3.7.1. General Requirements	21
3.7.2. Radiation Area	21
3.7.3. High Radiation Area	22
3.7.4. Very High Radiation Area	22
3.7.5. Airborne Radioactivity Area	23
3.7.6. Rooms or Areas	23
3.7.7. Containers and Lab Equipment	24
3.7.8. Sealed Sources	24

3.8. Surveys and Inspections	26
3.8.1. Radioactive Material Users	26
3.8.1.1. Classification	26
3.8.1.2. Survey Method	27
3.8.1.3. Typical Areas for Surveys	30
3.9.1.4. Records	30
3.8.2. Radiation Safety Office Surveys	30
3.8.3. Restricted and Unrestricted Areas	31
3.8.4. State of Maryland	31
3.9. Radioactive Waste	31
3.9.1. General Requirements	32
3.9.2. Solid Radioactive Waste	32
3.9.3. Liquid Radioactive Waste	33
3.9.4. Radioactive Vials	34
3.9.5. Animal Carcasses	34
3.9.6. Special or Unusual Waste	35
3.9.7. Disposal of Radioactive Waste	35
3.9.7.1. Removal by ENVSA	35
3.9.7.2. Burial	35
3.9.7.3. Disposal Into the Sanitary Sewer	35
3.9.7.4. Incineration	35
3.9.7.5. Final Disposal	35
3.10. Security	36
4. RADIATION PRODUCING DEVICES	36
5. REQUIRED POSTINGS . ALL USERS	36
5.1. Radiation Emergency Procedures	36
5.2. Notice to Employees	36
5.3. No Smoking, Eating, or Drinking	37
6. VIOLATIONS, SUSPENSIONS, AND APPEALS	40
6.1. Violations	40
6.2. Suspensions	40
6.3. Appeals	40
GLOSSARY	41
INDEX OF FIGURES AND TABLES	44
APPENDIX A (Radioactive Material Order Form)	45

1. ADMINISTRATIVE ORGANIZATION

1.1 PRESIDENT

The President delegates authority in matters pertaining to campus radiation safety to the Office of the Vice President of Academic Affairs and Provost. This office:

1. Assumes institutional responsibility through the Radiation Safety Officer and the Radiation Safety Committee (RSC) for general radiation safety practices and their administration.
2. Works with, Deans, Directors, and Department Chairpersons, through the Radiation Safety Officer, in establishing a program that provides for the safety of all personnel associated with laboratories using radioactive materials and/or radiation producing devices and meets the State of Maryland licensing/registration requirements.
3. Appoints the RSC and delegates appropriate authority to that body in matters pertaining to radiation safety.

1.2 RADIATION SAFETY COMMITTEE (RSC)

This Section is being revised

3. Furnishing the RSO with information concerning individuals and activities in their areas; particularly, pertinent changes in personnel and procedures.
4. Contacting the RSO whenever major changes in operational procedures, rooms locations, alterations to labs (e.g., shielding changes, removal or installation of radioactive material handling equipment) occur or when new operations which might lead to personnel exposure are anticipated.
5. Ensuring that all regulations governing the use of radioactive materials or radiation producing devices are complied with as established by the RSC, NRC, and the State of Maryland.
6. **Equipping each laboratory complex with survey meters capable of detecting the types of radiation that might be encountered in the area.** Ensure that the survey meters are in current calibration and deliver the instrument to the RSO if in need of repair or calibration.
7. Posting all areas under their control with proper radiation warning signs.
8. Ensuring that the personnel under their control discharge their individual responsibilities as listed in Section 1.6.4.
9. Ensuring that all necessary engineering controls are properly in place for use by personnel under their Authorization.

1.6.2 AUTHORIZED USER

An authorized user is a person who is designated this category on the Principal Investigator's Authorization. The authorized user is responsible to the Principal Investigator for all actions listed below for radioactive material or equipment use. This user may work with isotopes or equipment **without immediate supervision**, and may assume limited responsibilities as defined by the Principle Investigator.

1.6.3 INDIVIDUAL USER

An individual user is a person who is designated this category on the Principal Investigator's Authorization. The individual user is responsible to the Principal Investigator for all actions listed below for radioactive material or equipment use. The individual user **must work under supervision** of the Principle Investigator or an Authorized User designated by the Principal Investigator.

1.6.4 RESPONSIBILITIES OF USERS

The responsibility for safe handling of radioactive materials, sources and radiation producing devices rests with all designated users. The following minimum requirements shall be met: (See also Section 3.8.1)

1. Keep exposure to radiation As Low As Reasonably Achievable (ALARA).
2. Wear the prescribed dosimeter such as a whole body badge, TLD, and/or pocket dosimeter while working with radioactive materials, radiation producing devices, or in a radiation area. Personnel who work with only pure alpha emitters and RSO designated low energy beta and gamma emitters will not be required to wear badges. Dosimetry equipment must not be tampered with and must be protected from damage or abuse.
3. Use appropriate protective measures such as:
 - a. Wear protective clothing whenever contamination is possible and remove this clothing before leaving the restricted area in which it was used.
 - b. Use protective barriers and shields whenever required and appropriate.
 - c. Use remote handling tools such as forceps, tongs and pipettes to minimize personnel exposure, where applicable.
 - d. Use an approved hood or glove box while using or creating radioactive gases or volatile materials, such as welding on radioactive materials.
 - e. Cover work surfaces with absorbent paper and when using liquids, use a plastic underlining. The cover should be changed frequently.
 - f. Use stainless steel or disposable fiberglass trays lined with absorbent paper to confine contaminating materials and to limit or collect spillage in case of an accident.
 - g. Refrain from eating, drinking, smoking, chewing gum or tobacco, or applying cosmetics in a radiation area or where radioactive materials are used or stored. Storing or preparing food or drink in any area or equipment that is or has been used for radioactive materials, e.g., refrigerator, cabinets, glassware, is prohibited.
 - h. Keep cleaning equipment (brooms, mops, buffers, buckets, etc.) used in radiation designated spaces from being used in other areas.

4. Mark and label all radioactive contaminated or potentially contaminated containers and equipment with radioactive marking tape and/or labels as required.
5. Wash the hands (including under the fingernails) thoroughly and survey the hands, shoes and body for radioactive contamination. Remove all loose contamination before leaving the work area/laboratory.
6. Utilize the proper radioactive waste procedures as set forth in Section 3.9.
7. Maintain a log of all meter and wipe surveys conducted by the user. The frequency of survey is dependent on the operation and/or radioactive isotope(s) in use. See Section 3.8. The RSO is available to help establish the survey and record keeping necessary to comply with the licensing requirements.
8. Carry out decontamination procedures when necessary and take the necessary steps to prevent the spread of contamination to other areas.
9. Report accidental inhalation, ingestion, or injury involving radioactive materials to the user's supervisor and RSO. Cooperate with the RSO to evaluate possible exposure if necessary.
10. Know the type of material being used and clearly label all radioactive substances as radioactive with the isotope and activity. Appropriate labels are available from the RSO.
11. Keep the laboratory neat and clean. The work area should be free from equipment and material not required for the immediate procedure.
12. Assure that freezer or refrigeration equipment (spark proof if required) is available for the preservation of radioactive solutions which decompose at normal room temperatures, and for storage of contaminated animal carcasses, plants, or other unstable material awaiting disposal.
13. Eliminate all unnecessary sharp objects from areas where radioactive material is used.
14. Do not handle the telephone, reports, etc., with contaminated hands or while using protective gloves.

2. RADIATION EXPOSURE CONTROL

2.1 ALARA

The radiation protection standards set forth in this section are used to control radiation exposure to all occupationally exposed personnel and non-occupationally exposed personnel. It is the policy of University of Maryland Campus to keep this exposure As Low As Reasonably Achievable _____ (ALARA).

2.2 RADIATION PROTECTION STANDARDS

No individual may receive in one calendar year a total occupational exposure in excess of the following:

2.2.1 OCCUPATIONAL DOSE LIMITS

<u>Exposed Area</u>	<u>REM/yr</u>	<u>Sieverts/yr</u>
Whole body . head and trunk; gonads; arms above elbow, legs above the knee	5.0	0.05
Extremities . hands and fore. arms; feet and ankles, leg below the knee	50.0	0.5
Skin	50.0	0.5
Lens of eyes	15.0	0.15
Any Individual Organ or Tissue	50.0	0.5
Embryo/Fetus (Entire Period)	0.5	0.005

The difference between whole body and skin of whole body is determined by the penetrating power of the incident radiation. If the whole body is exposed to radiation with a half value layer of less than 1 mm of soft tissue, then this is considered a skin dose. The dose to the extremities is radiation of any energy.

2.2.2 INTERNAL EXPOSURE

Internal exposure may occur due to inhalation, ingestion or absorption through the skin. The limit to any organ or tissue is 50 Rem/yr (0.5 Sv/yr.) In all cases where the possibility of an airborne hazard exists, every operation will be closely monitored by the RSO with appropriate monitoring equipment.

Protective equipment as required will be worn throughout all such operations and all such experiments will be performed in a hood or glove box when deemed prudent. Appropriate monitoring equipment will be determined at that time with consideration given to the isotope, activity, location and experiment. The RSO has a variety of meters, detectors and air sampling equipment that may be used in such instances.

NOTE: The occupational limits are a summation of external and internal dose equivalents where applicable.

2.2.3 OCCUPATIONAL DOSE TO FERTILE WOMEN

The need to minimize exposure to the embryo/fetus is paramount. It is the policy of the University of Maryland Campus that every effort be made to keep the radiation exposure of the embryo/fetus to the very lowest practicable level during the entire gestation period. Exposure limits for fertile women are the same as for men. Once a pregnancy is declared by a woman, exposure will be evaluated, and the total exposure to the embryo/fetus will be limited to 0.5 rem for the total gestation period. If 0.45 rem exposure to the woman has been reached (at declaration time), the remaining exposure will be limited to 0.05 rem during the remainder of pregnancy.

2.2.4 OCCUPATIONAL DOSE LIMITS TO MINORS

The occupational dose limit to individuals under the age of 18 is 10% of the limits listed above. No individual under 18 years of age shall be employed where he/she could, under normal conditions, exceed this limit.

2.2.5 DOSE LIMITS FOR NON-OCCUPATIONALLY EXPOSED PERSONNEL (MEMBERS OF THE PUBLIC.)

Any person who is not regularly employed in using radioactive materials or radiation producing devices shall not receive in a calendar year from all sources of radiation a dose in excess of 2 percent of the limits in Section 2.2.1. This includes inspectors, casual visitors, maintenance repair persons, etc.

2.2.6 SURFACE CONTAMINATION

Any detectable contamination must be cleaned. Surface level results above those listed here must be decontaminated. These levels are determined by a wipe test unless otherwise noted. Generally, a beta/gamma survey meter reading of twice background on the surface in question indicates the presence of radioactive contamination and necessitates cleaning.

<u>Item</u>	<u>Alpha</u>	<u>Beta/Gamma</u>
Skin, hair, clothing, shoes	ND*	100 dpm/100 cm ² **
Cold areas (office, other labs, etc.)	ND*	100 dpm/100 cm ²
Equipment, lab surfaces, floors, controlled areas ***	5 dpm/100cm ²	100 dpm/100 cm ²

* Non-detectable

** Disintegrations per minute

*** 1000 dpm/100 cm² for ³H

In those cases where surface contamination is found, but is not removable, the item must either be discarded as radioactive waste or the contamination permanently fixed to the item and the surface conspicuously labeled as contaminated. Clothing that cannot be decontaminated will be held for decay (if reasonable) or disposed of as radioactive waste. Personnel whose skin cannot be decontaminated will be dealt with as indicated by the type, extent and location of the contamination.

2.3 PERSONNEL MONITORING (DOSIMETRY)

Personnel monitoring is required for anyone who enters an area in which he or she may receive in one calendar year an exposure to a major portion of the body in excess of **10** percent of the limits in Section 2.2. A personnel dosimeter is required in this case. Personnel dosimeters are issued by the Radiation Safety Officer and his staff. Dosimeter as defined in the Glossary is "A device that measures radiation exposure, such as a dosimeter badge, ionization chamber, or "TLD".

2.3.1 DOSIMETER

1. The **aluminum oxide dosimeter** is a new concept in personnel dosimetry material which is currently used on the Campus and at satellite facilities. It is a device used to measure the total exposure received by a person exposed to beta, X, and gamma radiation. **Neutron radiation is measured by a small device attached within the aluminum oxide dosimeter.**
2. The **dosimeter** is used to provide the permanent radiation exposure history for the wearer. Therefore:
 - a. It will only be worn by the person to whom it is issued.
 - b. It will be worn in a location on your person (body trunk) where it is likely to receive the highest exposure on your whole body;
 - c. Care must be taken not to shield it with other devices such as ID badges, pens/pencils, coins, keys, aprons, etc.
 - d. It must not be lost, damaged, or exposed to radiation except while being worn for occupational purposes.
 - e. **It will be exchanged every two months (usually on or about the 1st of the month beginning with January.)**
 - f. It will not be used at locations other than the Campus and satellite facilities.
3. Wrist badges may be issued in cases where the hands may be exposed to significantly higher doses than the whole body. Wrist badges are issued upon reasonable request, i.e., use with ³H would not be reasonable because the badge could not detect the low energy beta from the ³H isotope. They will be issued when the RSO determines a requirement exists with respect to the isotope, activity and experiment performed.

2.3.2 THERMOLUMINESCENT DOSIMETERS (TLD)

The thermoluminescent dosimeter is a device used for measuring the total exposure by beta, gamma, and/or neutron radiation. The TLD will be issued in all cases where personnel are using ³²P and other isotopes/radiation sources as determined by the Radiation Safety Officer and his staff. Ionizing radiation striking the chips is "stored" by raising the electrons within the medium to a higher energy. When the chips (1/8 x 1/8 x 0.035 in.) are heated to a high temperature (approximately 355 °C), the electrons return to their ground state and light photons are emitted. The quantity of light is directly proportional to the exposure (in rads) received by the TLD. Since the TLD is used to provide permanent radiation exposure history, the same rules for dosimeters in Section 2.3.1.2 apply.

2.3.5 EXPOSURE HISTORY

All records concerning personnel exposure are maintained indefinitely by the RSO. The amount of exposure received at the University of Maryland by an individual is determined after processing and recording exposures indicated by the film badges or TLDs. The total lifetime exposure on file of an individual is comprised of all exposures received at other facilities (if any) and at the University of Maryland.

2.3.5.1 LOST OR DAMAGED DOSIMETERS

An administrative dose will be determined for an individual when a film badge or TLD issued by the RSO is lost, damaged, or returned late. The exposure will be evaluated by any of the following methods:

1. Obtaining the individuals work history for the period in question and evaluating the exposure taking into consideration the work performed and past exposure history.
2. Averaging the recorded doses for the previous three periods.

In addition to an administrative dose the individual will be subject to Radiation Safety Procedure RSO #005A which requires a fine be charged based on the frequency of the lost, damaged or late dosimeter. The charge per frequency \$1

2.3.6 BIOASSAY PROGRAM

Bioassays of occupationally exposed personnel will be performed when there is believed to be reasonable risk of internal radiation exposure. Bioassays are performed by the RSO and all results are on permanent file. If analysis shows any elevated content of the isotope in question approaching the annual limit of intake (ALI) listed in Appendix B of 10 CFR 20, Table 1, Column 1&2, the user will be referred to a clinic or hospital for further evaluation. A user will be allowed to return to work, if it is determined that he/she will not exceed the allowable exposure limits set by Federal and State Regulations.

Radioisotopes which require bioassays are listed on the Authorization for Possession and Use of Radioactive Materials issued to the Principle Investigators. Instructions for the appropriate bioassay are provided with the Authorization. Generally, all require a baseline measurement prior to use of an isotope exceeding the amounts listed in the Authorization.

Bioassays will be performed when:

- (1) An adult is likely to receive, in one year, an intake in excess of 10 percent of the applicable ALI listed in Appendix B, 10 CFR 20, Table 1 Columns 1 & 2.
- (2) A minor, or declared pregnant woman is likely to receive, in one year, a committed effective dose equivalent in excess of 0.05 rem (0.5 mSv).

3. RADIOACTIVE MATERIALS . POLICY AND PROCEDURES

The University of Maryland Campus has been issued a license to possess, use, and store radioactive materials by the State of Maryland. This license limits the amount of radioactive material (including materials created by radiation producing devices) which may be possessed, used and stored on campus. Individual users may be authorized by the Radiation Safety Officer and the Radiation Safety Committee (RSC) to possess, use and store radioactive materials. The total activity of these authorizations including radioactive waste on hand shall not exceed the amount listed on the license.

3.1 PERSONNEL AUTHORIZATION

3.1.1 PRINCIPAL INVESTIGATOR (PI)

Employees of the University of Maryland at College Park and personnel authorized to utilize University facilities by the Administration may be authorized as Principal Investigators by the Radiation Safety Officer and the Radiation Safety Committee. This Authorization may be for the Possession and Use of Radioactive Material or the Possession and Use of Radiation Producing Devices. Procedures for these authorizations are set forth in Section 3.2. Registration and certification of radiation producing devices are commented on in Section 4. and the Radiation Safety Manual Supplement.

3.1.2 UNDER 18 YEARS OF AGE

An individual who has not reached his/her 18th birthday shall not be occupationally exposed to radioactive materials or radiation producing devices such that he/she has the potential of exceeding 10% of the limits set in Section 2.2.

3.1.3 UNDERGRADUATE STUDENTS

In any instructional or research program in which undergraduate students are involved, radioactive materials or radiation producing devices will be used under the control of a Principal Investigator or Authorized User. At the request and recommendation of the Principal Investigator, the RSC and/or the Radiation Safety Officer may allow an individual to perform particular processes or functions when adequate training has been demonstrated and documented.

3.1.4 GRADUATE STUDENTS

Graduate students under instruction or performing research at the University will be governed by the rules set forth in Sections 3.1.2 and 3.1.3. However, when evidence is presented to the Radiation Safety Officer and/or the RSC that a graduate student has taken an approved course in radiation safety, laboratory procedures working with radioactive materials, and has had on-the-job training considered appropriate by the Radiation Safety Officer and/or the RSC in the use of comparable radioactive materials or devices, the student, at the request of the Principal Investigator, may be permitted to perform particular processes or functions without the immediate supervision of a faculty or staff member. A record of the student's training and experience will be sent the RSO to be filed with the Principal Use's Authorization for Possession and Use or Authorization for Radiation Producing Devices.

3.2.2 TRAINING AND EXPERIENCE OF RADIOACTIVE MATERIAL AND RADIATION PRODUCING EQUIPMENT USERS

All individuals applying for possession and use must complete and submit a training and experience (T&E) form and a Receipt of Radiation Safety Manual at the time of application. If approval is given by the Radiation Safety Officer and/or RSC, these will be filed with the authorization. All personnel who work without immediate supervision on the authorization, or are added to work as an authorized user must complete and submit the T&E form and Radiation Safety Manual Receipt form before approval will be given by the Radiation Safety Officer and/or RSC.

3.2.3 PROCESSING THE APPLICATION

Upon receipt of a new application and training and experience form, the RSO will review the application for completeness, and if additional information is necessary, will return it with a request for the information. When all necessary information is received, the RSO will visit the site(s) for a pre-authorization inspection.

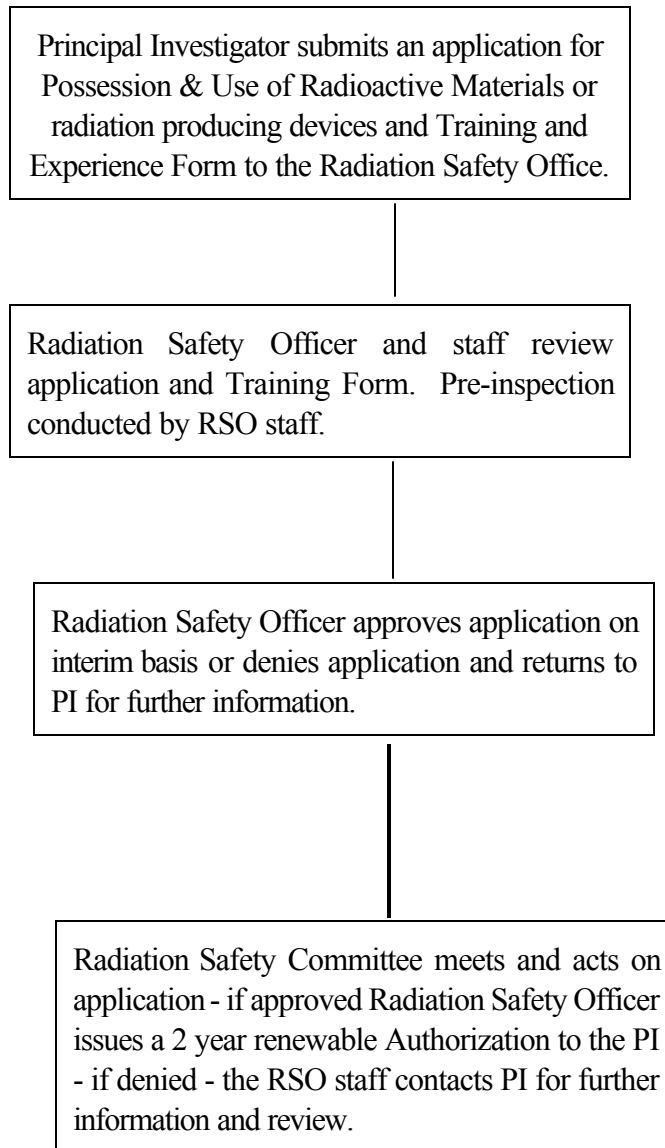
Based on the application, preauthorization survey, and review by the RSO, the Radiation Safety Officer and/or the Chairman of the RSC may issue an interim approval prior to the full review by the RSC. This entire package is then presented to the RSC for review at one of their 3 annual meetings. If approved, a formal authorization is issued by the Radiation Safety Officer.

3.2.4 RENEWAL OF AUTHORIZATION

Two months before the expiration date of an authorization, the Principal Investigator must notify the RSO in writing of his/her intention to renew the authorization. The RSO will then provide the user with the form for renewal which, when completed, will be returned to the RSO. The RSO will review the renewal application and present it to the RSC for action. If approved, a formal authorization will be issued by the Radiation Safety Officer.

Authorization Procedure Flow Chart

Figure 3.1



3.3 POSSESSION, RECEIPT AND INVENTORY OF RADIOACTIVE MATERIAL

The possession and use of radioactive materials is restricted to personnel who are currently authorized by the Radiation Safety Officer and/or the RSC and is limited to those isotopes in the **physical form and activity** specified in the authorization. These restrictions are necessary for health and safety reasons, and to assure compliance with the broad scope license issued to the University by the State of Maryland.

3.3.1 ORDERING RADIOACTIVE MATERIALS

All orders for radioactive materials will be placed through and by the Radiation Safety Officer and his/her staff. Orders for radioactive material shall be forwarded on the University of Maryland, Radiation Safety Office, Radioactive Materials Order Form to the Radiation Safety Office by fax, campus mail or in person. The fax number may be found on the Order Form.

Radioactive Materials are ordered using the University Purchase Card system. All pertinent information must be included on the Order Form so that the order may be placed by the RSO and his/her staff. A copy of the Order form is included in this manual as Appendix A, on page 54. The Order Form is available from your departmental business office or by calling the Radiation Safety Office at 405-3985.

3.3.2 RECEIPT OF RADIOACTIVE MATERIALS

All incoming shipments of radioactive materials including gifts, will be received by the RSO. Upon receipt, the RSO will complete all tests and surveys deemed appropriate and in accordance with the regulation for contamination control. An inventory control card shall be prepared for each item. Upon notification that the radioactive material has been received and is ready for pickup, the user or a designated representative will come to the Radiation Safety Office to take possession of the material. A copy of the inventory card shall be given to the user upon pickup of the item, and the person receiving the material will sign the receipt log.

3.3.3 INVENTORY CONTROL

Radioactive material inventory is maintained by the RSO staff on a computer program. Records are updated and maintained as required. When the material of a particular RSO number (assigned by the RSO) is no longer on hand (having been properly decayed, used or disposed of) the user will indicate this on their copy of the control inventory sheet supplied with the material when received, and return the copy (**with signature and date** of disposal or decay) to the RSO for removal from active inventory.

3.5.2 VEHICULAR TRANSPORT

Vehicular transport may require the assistance of the Radiation Officer and his/her staff for packages not capable of being hand carried. If the package size or amount of shielding required precludes hand carrying, or public roadways must be utilized, inform the RSO so that these arrangements can be made. Authorized individuals must have received DOT training from the RSO in order to transport material in a vehicle on or off campus. In either case the individual must contact the RSO prior to transportation to ensure proper packaging, shipping and license compliance.

3.5.3 TRANSPORT BETWEEN AUTHORIZED AREAS

Radioactive materials (including waste) that must be moved from one room or area to another within interconnecting buildings, in general, may be moved without consulting the RSO, **provided:**

1. Both rooms or areas are listed on the user's Authorization.
2. Proper shielding, if required, is utilized to keep exposure ALARA.
3. The package is labeled with suitable radiation labels.
4. The package is capable of containing all the material, in case of an accident, in order to avoid contamination.
5. The package is moved expeditiously via the most direct route and in the physical possession of the transporter at all times.

3.7 SIGNS, LABELS, AND SIGNALS

The use of warning or caution signs is necessary to warn unauthorized or unsuspecting personnel of a hazard and to remind authorized personnel as well. The placement of certain signs and signals and the geometric dimensions of the radiation symbol and colors are provided in the State regulations. Signs and labels are available from the RSO.

3.7.1 GENERAL REQUIREMENTS

1. Radioactive Materials, Radiation Areas, High Radiation Areas, Airborne Radioactivity Areas, shipping containers and vehicles will be marked or posted as required by various regulations. The RSO will assist in providing the necessary information, signs, and/or labels.
2. All signs, labels, and signals will be posted in a conspicuous place.
3. All radiation control areas, including Radiation Areas, Contamination Control Areas, and Airborne Radioactivity Areas will be established by a barrier. Walls, fences, rope, or tape may be used to define the boundaries of a controlled area.

3.7.2 RADIATION AREA

Radiation Area signs (Figure 3.2) will be posted at all entrances to any room, laboratory or other area where a person could receive a dose equivalent in any one hour in excess of 5 mrem at 30 centimeters from the radiation source or from any surface that the radiation penetrates.

3.7.3 HIGH RADIATION AREA

High Radiation Area signs (Figure 3.3) will be posted at all entrances to any area where a person could receive a dose equivalent in any one hour in excess of 100 mrem at 30 centimeters from the radiation source or from any surface that the radiation penetrates.

In addition to this posting, all such entrances will:

1. Have a control device which upon entry into the area will cause the radiation level to be reduced below the level at which an individual might receive a dose of 100 mrem in 1 hour, or
2. Have a control device which will activate a conspicuous audio or visual alarm in such a manner to alert the individual entering the area and the supervisor of the facility of the entry, or
3. Be kept locked except during periods when access to the area is required with positive control over each individual entry. Keys for entry will be available to authorized personnel only, or
4. Be under direct surveillance if the High Radiation Area is to be established for a period of less than 30 consecutive calendar days.

3.7.4 VERY HIGH RADIATION AREA

A very high radiation area will be posted with appropriate warning signs where radiation levels could result in the person receiving an absorbed dose in excess of 500 rads in one hour at one meter from a radiation source or from any surface that the radiation penetrates.

The same additional requirements listed above (3.7.3 1-4) apply to the very high radiation area.

Figure 3.2

RADIATION AREA SIGN

Figure 3.3

HIGH RADIATION AREA SIGN

3.7.5 AIRBORNE RADIOACTIVE AREA

Airborne Radioactivity Area signs (Figure 3.4) will be posted at all entrances to any area where airborne radio- activity persists for a period in excess of 8 hours. Entry during any period of airborne radioactivity will be strictly controlled by the Principal Investigator, or his appointee.

3.7.6 ROOMS OR AREAS

1. A Radioactive Materials sign (Figure 3.5) will be posted at all entrances to an area where unsealed sources of radiation are used or stored. This includes areas where radioactive waste is kept in an accessible condition.
2. If a room or area meets the conditions in Sections 3.7.2 or 3.7.3 and radioactive materials are used or stored, then the appropriate sign and the Radioactive Materials sign or a combination of the two signs (Figure 3.6) will be posted.

3.7.7 CONTAINERS AND LABORATORY EQUIPMENT

All containers of unsealed sources of radiation (including waste) and all laboratory equipment used in any operation involving such material will be appropriately labeled or tagged. See Figure 3.7.

3.7.8 SEALED SOURCES

1. If the conditions of Section 3.7.2 or 3.7.3 do not exist in an area where sealed sources are stored, the entrance need not be posted, provided, that the radiation level 30 centimeters from the surface of the source container or housing does not exceed 5 mrem/hr, and the storage location (drawer, cabinet, refrigerator, room, etc.) provides adequate security for the source.
2. The outside of the storage container within such an area will be conspicuously posted with the sign in Figure 3.5.
3. In addition, if each sealed source is not permanently imprinted or embossed with the appropriate symbol and wording of any color, the label shown in Figure 3.7 will be affixed to each source.

Figure 3.4

AIRBORNE RADIOACTIVITY AREA SIGN

Figure 3.5

RADIOACTIVE MATERIAL SIGN

Figure 3.6

COMBINED RADIOACTIVE MATERIAL AND RADIATION AREA SIGNS

Figure 3.7

RADIATION MATERIALS LABELS AND TAGS

3.8 SURVEYS AND INSPECTIONS

3.8.1 RADIOACTIVE MATERIAL USERS

The radioactive material user has the primary responsibility for the control of radioactive contamination. The procedures outlined below will be followed when using unsealed radioactive materials, i.e., any material which is not a solid metal or permanently encapsulated.

Since individual circumstances vary widely with regard to maximum activity, physical and chemical form of nuclides used, and to the various laboratory procedures in which radioactive material is employed, it is reasonable and prudent to attempt some classification of radioisotope facilities to determine the radiotoxicity of isotopes employed and how frequently they should be surveyed.

It is also recognized that radioactive materials are not in constant use in some laboratories on campus. Surveying laboratories for radioactive contamination during periods of infrequent use will be performed by the user. The RSO may be consulted to determine a reasonable and prudent survey frequency under such circumstances.

If for instance, such materials are used only for one laboratory a semester, only during the period of use would these guidelines apply. If the materials are placed in storage for the remainder of the year, surveys of the laboratory are unnecessary during the storage period. An entry will be required in the wipe log to indicate that "no RAM was used" for each month of inactivity. The storage site will require surveying during the storage period.

3.8.1.1 CLASSIFICATION

The method adopted, which is taken from "Report of Committee V, International Commission on Radiological Protection (ICRP) 1965", designates three levels of survey frequency based on radionuclide, activity per use, and radiotoxicity.

Users must first classify their laboratory areas, utilizing the attached two tables. Locate the isotope(s) used in Table 3.1 to determine the group classification to which the laboratory conforms. Then, utilizing Table 3.2, determine the appropriate survey frequency group, based on the amount per use.

For example:

An experiment is conducted employing a vial containing ^{125}I . The vial contains 5 mCi, and is opened to the laboratory environment while 1 mCi is removed. The vial is then resealed and returned to storage. First, locate ^{125}I in Table 3.1 in Group II. Then locate 5 mCi ^{125}I in Table 3.2 in Group II, Class II. The analysis indicates that the laboratory should be surveyed at least weekly while this level is employed. If it is a "one shot" only experiment, a survey should be done at the end of the experiment or at least once weekly which ever is shorter.

3.8.1.2 SURVEY METHOD

The current requirement of regulatory agencies stipulates that occupational radiation exposure be kept as low as reasonably achievable (ALARA). Contamination control is vital to this objective. The following survey methods are required for all users of radioactive materials:

1. Initial Survey

An initial survey will be conducted with an instrument, such as a GM tube or NaI crystal scintillation detector, to determine if contamination is present on a surface or in a particular area of a lab. The isotope employed shall determine the type of instrument that should be used in such a survey:

Type 1 - For gamma and beta emitters of sufficient energy, a GM tube may be used; a scintillation detector for the appropriate emitter may also be used.

Type 2 - For alpha emitters, an air proportional detector must be used. This device is available for a short term use from the Radiation Safety Office.

Type 3 - For low energy gamma emitters, a NaI crystal scintillation detector should be used.

Table 3.1
Classification of Radionuclides according to Relative Radiotoxicity per unit Activity

Group 1

Pb-210	Po-210	Ra-226	Ac-227	Th-227	Th-228	Th-230	Pa-231	U-230
U-232	U-233	U-234	Np-237	Pu-238	Pu-239	Pu-240	Pu-241	Am-241
Am-243	Cm-242	Cm-243	Cm-244	Cm-245	Cm-246			

Group 2

Na-22	Cl-36	Ca-45	Sc-46	Mn-54	Co-60	Sr-89	Sr-90	Y-91
Zr-95	Ru-105	Ag-110m	Cd-115m	In-114m	Sb-124	Sb-125	Te-127m	Tc-129m
I-123	I-125	I-126	I-129	I-131	Ca-134	Ca-137	Ba-140	Ce-144
Eu-152		Eu-154	Tb-160	Tm-170	Hf-181	Ta-182	Ir-192	Ti-204
Bi-210	At-211	Pb-212	Ra-224	Ac-228	Pa-230	Th-234	U-236	Bk-249

Group 3

H-3	C-14	F-18	Na-24	P-32	S-35	K-42	K-43	Ca-47
Sc-47	Cr-51	Mn-52	Fe-55	Fe-59	Co-57	Co-58	Ni-63	Ni-65
Zn-65	Ga-72	As-73	As-74	As-76	As-77	Se-75	Br-82	Kr-85m
Rb-86	Sr-85	Kr-87	Y-90	Nb-95	Mo-99	Tc-97	Tc-99	Ru-97
Ru-103	Rh-105	Pd-109	Cd-109	Ag-105	Ag-111	Sn-113	Sb-122	Te-129
Te-131m	Te-132	Xe-127	Ba-131	La-140	Ce-141	Ce-143	Pr-143	Nd-147
Nd-149	Pm-147	Pa-149	Sm-151	Sm-153	Eu-155	Gd-159	Dy-165	Ho-166
Er-169	Er-171	Tm-171	Yb-175	La-177	Re-186	Ir-190	Ir-194	Pt-191
Pu-197	Pt-197	Au-196	Au-198	Hg-197	Hg-197m	Hg-203	Ti-201	Ti-202
Pb-203	Rn-222	Th-231						

Group 4

O-15	Ar-37	Co-58m	Ni-59	Zn-69	Ga-71	Kr-85	Sr-85m	Rb-87
Y-91m	Zr-93	Nb-97	Tc-96m	Tc-99m	Rh-103m	In-113	Xe-131m	Xe-133
Ca-134m	Ca-135	Sm-147	Re-187	Os-191m	Pt-193m	Pt-197m	Th-232	U-235
U-238	U-Nat							

Table 3.2
Radioisotope Facility Classification

	CLASS I	CLASS II	CLASS III
Radionuclide Group	At least every 30 days	At least weekly	At least daily
I	≤ 0.01 mCi	.01 to 1.0 mCi	> 1 mCi
II	≤ 1.0 mCi	> 1.0 to 10.0 mCi	> 10 mCi
III	≤ 10 mCi	> 10 to 100 mCi	> 100 mCi
IV	≤ 100 mCi	100 to 1000 mCi	> 1000 mCi

NOTE: Isotopes such as ^3H , ^{35}S , and ^{14}C are difficult to detect with a GM detector and will not be relied upon as the sole method for detection of these isotopes. A wipe test will be used to determine the level of contamination when using these isotopes.

2. Wipe Test

The final item of this method is the wipe test. Any time unsealed sources of radioactive materials are used in the lab, a wipe test will be conducted and the results posted in the wipe log book in the units of DISINTEGRATIONS PER MINUTE (DPM).

$$(DPM = CPM / \textit{Efficiency of Detector})$$

Surface areas to be surveyed will be wiped with one inch discs of filter paper or parafilm, and the area per wipe will cover approximately 100 cm². These wipes will be placed in a vial containing standard scintillation cocktail and counted in a Liquid Scintillation Counter. If any reading exceeds 100 dpm, (1000 for ^3H) that area will be considered contaminated and will be cleaned. The RSO will be notified of a contamination condition.

3.8.1.3 TYPICAL AREAS FOR SURVEY

In handling radioactive, or any other material in liquid form, spills may occur. Spills are not the only way that contamination may occur. Some may be on your protective clothing, such as gloves or lab coats. The contamination may be spread by contact with other surfaces.

Areas of concern include, but are not limited to:

- Lab bench top and side surfaces;
- Fume hood interior and exterior surfaces;
- Floor area in front of benches and hoods;
- Lab chairs and stools;
- Light switches;
- Drawer and other handles;
- Bare hands, after glove removal;
- Shoe soles, seats of pants, etc.

3.8.1.4 RECORDS

A wipe log record will be kept of each survey performed. A record of the results of any wipe tests shall be maintained for 1 year in the log. In order to facilitate recording the survey results, it may be convenient to draw a sketch of the laboratory and block it off into grids. Then, when a wipe or instrument results is recorded, refer to the grid designation. Wipe log booklets are available from the Radiation Safety Office. These records must always be available to the RSO and State Radiation Control staff for review. Records (Printouts) of wipe test survey results data will be retained for 1 year.

3.8.2 RADIATION SAFETY OFFICE SURVEYS

The Radiation Safety Office will survey each laboratory that uses unsealed radioactive materials quarterly. Laboratories that show a record of violations of a repeat nature on these surveys will be inspected more frequently until a satisfactory finding of corrective actions has been achieved. Some of the more common violations and noncompliance issues are as follows:

1. Wipe Log: The monthly wipe test was not recorded in the laboratory wipe log; RSO personnel were unable to locate wipe log; the wipe log was not up to date.
2. Waste: Radioactive waste was found in an approved container but no entries were found on the container inventory card; waste containers were not clearly labeled with proper radioactive material stickers/labels; radioactive waste was found in unapproved and unlabeled waste containers.
3. Dosimetry: Individuals working with radioactive material requiring dosimeters and/or TLDs were not wearing their dosimetry; dosimeters in use were out of date.
4. Signs: Labels and signs appropriate for laboratories or equipment not found or missing.

The purpose of the RSO survey is to help the user maintain a safe work environment and will include:

1. Meter and wipe surveys of work surface, floor, refrigerators, hoods, etc., to assure no contamination.
2. A check of fume hoods to assure that they are in working condition and have sufficient air flow for use with radioactive materials.
3. A review of wipe log.
4. An interview with the user and/or occupant to determine if there have been any new or unusual occurrences since the last survey and if the RSO may be of any assistance.
5. A written report of the survey. Any deficiency found will be noted and details sent to the user for corrective actions.

All notices of violations require a corrective response. If a response is not provided to the RSO, the RSC will be advised and corrective action will be taken.

3.8.3 RESTRICTED AND UNRESTRICTED AREAS

Every area that requires posting with Radioactive signs is considered a restricted area. All other areas are considered unrestricted areas. Periodically, the RSO will measure the levels of radiation in unrestricted areas immediately adjacent to the restricted areas. It is incumbent upon the user to construct such shielding as required to minimize any radiation to unrestricted areas. The radiation level in an unrestricted area must be such that a dose does not exceed 2 mrem in one hour.

3.8.4 STATE OF MARYLAND

The State of Maryland, Department of the Environment will periodically visit the Campus for a license compliance inspection. The date of the inspection is determined by the State Agency and is unannounced. The inspection includes monitoring and record checks of the laboratory areas, inspection of procurement, disposal and inventory records, records of qualification of users, interviews with users and lab occupants, and a check of all aspects of the Radiation Safety Office functions, activities and records.

3.9 RADIOACTIVE WASTE

No radioactive materials (or materials which may be contaminated with radioactive materials) may be disposed of by conventional methods. Collection, storage, and removal of radioactive wastes must be carried out as specified in the following sections. Authorized users are responsible for keeping records of all disposals so that current inventories reflect actual amounts of isotopes on hand. Authorized users are responsible for their waste material until possession by the RSO is established. To have waste picked up from your lab access the Environmental Affairs page at: <http://www.essr.umd.edu>

Figure 5.2

DEPARTMENT OF THE ENVIRONMENT
DIVISION OF RADIATION CONTROL
2500 Broening Hwy, Baltimore, MD 21224

Radiological Health
(410) 631-3300
Night/Weekend
1- (800) 633-6101

NOTICE TO EMPLOYEES

In part D of its Rules and Regulations, (COMAR 26.12.01.01) The Maryland State Department of the Environment has established standards for your protection against radiation hazards. In Part J, DOE has established certain provisions for the options of workers engaged in work under an Agency License or Registration.

YOUR EMPLOYER'S RESPONSIBILITY -

1. Apply these regulations to work involving sources of radiation.
2. Post or otherwise make available to you, a copy of the Maryland State Department of the Environment regulations, licenses, notices of violations, and operating procedures which apply and explain their provisions to you.

YOUR RESPONSIBILITY AS A WORKER-

You should familiarize yourself with those provisions of the regulations and procedures which apply to the work you are engaged in. You should observe their provisions for your own protection and the protection of your co-workers.

WHAT IS COVERED BY THESE REGULATIONS -

1. Limits on exposure to radiation and radioactive material in restricted and unrestricted areas.
2. Measures to be taken after accidental exposure.
3. Personnel monitoring, surveys, and equipment.
4. Caution signs, labels, and safety interlock equipment.
5. Exposure records and reports.
6. Options for workers regarding Agency inspections; and
7. Related Matters.

REPORTS ON YOUR RADIATION EXPOSURE HISTORY -

1. The regulations require that your employer give you a written report if you receive an exposure in excess of any applicable limit as set forth in the regulations or in the license. The basic limits for exposure to employees are set forth in Sections D.201, D.203, and D.204 of the regulations. These sections specify limits on exposure to radiation and exposure to concentrations of radioactive material in air and water.
2. If you work where personnel monitoring is required:
 - a. Your employer must give you a written report, upon termination of your employment, or your radiation exposure.
 - b. Your employer must advise you annually of your exposure to radiation.

INSPECTIONS -

All licensed or registered activities are subject to inspection by representatives of the Maryland State Department of the Environment. In addition, any worker or representative of workers who believes that there is a violation of the Maryland Radiation Act, the regulations issued thereunder, or the terms of the employer's license or registration with regard to radiological working conditions in which the worker is engaged, may request an inspection by sending a notice of the alleged violation to the Maryland State Department of the Environment. The request must set forth the specific grounds for the notice, and must be signed by the worker or the representative of the workers. During inspections, Agency inspectors may confer privately with workers, and any worker may bring to the attention of the inspectors any past or present condition which he believes contributed to or caused any violation as described above.

POSTING REQUIREMENT

Copies of this notice must be posted in a sufficient number of places in every establishment where employees are employed in activities licensed or registered, pursuant to Part B or Part C to permit employees working in or frequenting any portion of a restricted area to observe a copy on the way to or from their place of employment.

LOCATION OF REGULATIONS AND RECORDS

Copies of all regulations, licenses, and personnel exposure record applicable to the use of radioactive materials, radiation producing sources and equipment are located in the University of Maryland Radiation Safety Office for your review.

Figure 5.3

**NO SMOKING ,
EATING, OR DRINKING
PERMITTED
IN THIS AREA**

6. VIOLATIONS, SUSPENSIONS, AND APPEALS

6.1 VIOLATIONS

The Principal Investigator of radioactive materials and/or radiation producing devices will, when cited for non-compliance of applicable UMD Campus, State and Federal regulations, act to be in compliance as soon as possible. The RSO will assist the user if necessary or requested.

6.2 SUSPENSIONS

1. The Radiation Safety Officer is charged with recommending to the Vice President for Academic Affairs and Provost the suspension of activities or operations in any campus facility where there is a disregard for compliance with appropriate regulations, a significant safety, health or property damage hazard exists, and independently suspending activities or operations which could reasonably be expected to cause serious harm or cause death when the responsible individual will not or cannot correct the condition immediately.
2. In the event that the Radiation Safety Officer deems it necessary to close a laboratory, the closing order will be placed in writing and immediately forwarded to the user. Included in the order will be a statement of the right to appeal the action before the RSC.

6.3 APPEALS

In the event that a program or operation is suspended under Section 6.2, the user has the right to appeal the suspension to the RSC. When a written request to appeal is received by the Chairperson of the RSC, the RSC will meet within five (5) working days to hear the appeal. Upon hearing the appeal, the RSC will (by initial verbal order, and if reasonable, followed by a written statement) uphold or rescind the suspension and make recommendations to alleviate the current and any future problems.

The RSC has the responsibilities stated in Section 1.2 as well as the full authority to terminate an authorization for possession and use of radioactive materials, and the use of radiation producing devices on the UMD Campus.

GLOSSARY

ABSORBED DOSE: The energy imparted to matter by ionizing radiation per unit mass of irradiated material.

AIRBORNE RADIOACTIVE MATERIAL: Any radioactive material dispersed in the air in the form of dusts, fumes, mists, vapors, or gases.

ALARA: A program that is used to ensure that personnel radiation exposure is kept As Low As Reasonably Achievable.

AUTHORIZED USER: A person who is authorized by the Principal Investigator to perform procedures or use radiation producing equipment without supervision.

CASUAL VISITOR: A person who is visiting without intent to participate in the operation or program of a laboratory such as a person on tour, an inspector, etc.

CURIE: The basic unit to describe the intensity of radioactivity in a sample. $1 \text{ Ci} = 3.7 \times 10^{10}$ disintegrations per second.

DECLARED PREGNANT WOMAN: Declaration made by a woman who has voluntarily informed her employer, in writing, of her pregnancy and the estimated date of conception.

DOSE: Absorbed dose, dose equivalent, effective dose equivalent, committed dose equivalent, committed effective dose equivalent, or total effective dose equivalent.

DOSE RATE: The radiation dose delivered per unit time and measured, for instance, in rems per hour.

DOSIMETER: A device that measures radiation dose, such as film badge, ionization chamber, or TLD.

DOSIMETRY: The measurement of the amount of radiation delivered to a specific place or the amount of radiation that was absorbed there.

EXPOSURE RATE: The amount of ionization produced in air per time, in units of R/hr for example.

HIGH RADIATION AREA: Any area accessible to individuals, in which there exists radiation at such levels that a major portion of the body could receive a dose in excess of 100 millirem (mrem) in one hour at 30 centimeters from the radiation source or from any surface that the radiation penetrates.

INDIVIDUAL USER: Any individual who works with radioactive materials, or radiation producing equipment.

INDUCED RADIOACTIVITY: Radioactivity that is created when substances are bombarded with neutrons, as from a nuclear reactor, or with charged particles produced by accelerators.

NON IONIZING RADIATION: Radio or microwaves; visible, infrared or ultraviolet light.

NRC: United States Nuclear Regulatory Commission

OCCUPATIONAL DOSE: Exposure of an individual to radiation (1) in a restricted area; or (2) in the course of employment in which the individual's duties involve exposure to radiation.

PARTICLE ACCELERATOR: A machine capable of accelerating electrons, protons, deuterons, or other charged particles in a vacuum and of discharging the resultant particulate or other radiation into a medium at energies usually in excess of 1 Mev.

PERSONNEL MONITORING: Determination by either physical or biological measurement of the amount of ionizing radiation to which an individual has been exposed, such as by measuring the darkening of a film badge or performing a radon breath analysis.

PRINCIPAL INVESTIGATOR: The individual responsible for a particular program. This individual may be called the Principal Investigator and is authorized by virtue of UMD procedures to engage in the activity where controls and accountability are required.

RAD: The basic unit of absorbed dose of ionizing radiation. A dose of one rad means the absorption of 100 ergs of radiation energy per gram of absorbing material.

RADIATION: Ionizing radiation, i.e., gamma rays, x-rays, alpha and beta particles, high speed electrons, neutrons, and other nuclear particles.

RADIATION AREA: Any area accessible to individuals in which there exists radiation at such levels that a person could receive a dose equivalent in excess of 5 millirems (mrem) in one hour at 30 centimeters from the source or any surface that the radiation penetrates.

RADIOACTIVE MATERIAL: Any material (solid, liquid, or gas) which emits radiation spontaneously.

RADIOACTIVITY: The disintegration of unstable atomic nuclei by the emission of radiation.

REM: A special unit of any of the quantities expressed as dose equivalent. The dose equivalent in rems is equal to the absorbed dose in rads multiplied by the quality factor.

RESTRICTED AREA: Any area where access is controlled by the licensee for purposes of protection of individuals from exposure to radiation and radioactive materials.

RSC: Radiation Safety Committee.

RSO: Radiation Safety Office.

TLD: Thermoluminescent dosimeter.

UMD: University of Maryland Campus and all properties under its control.

UNRESTRICTED AREA: Any area where access is not controlled or limited by the licensee.

VERY HIGH RADIATION AREA: An area accessible to individuals, in which radiation levels could result in an individual receiving an absorbed dose in excess of 500 rads in one hour at one meter from a radiation source or from any surface that the radiation penetrates.

INDEX OF FIGURES AND TABLES

Figure 3.1	Authorization Procedure Flow Chart	16
Figure 3.2	Radiation Area Sign	22
Figure 3.3	High Radiation Area Sign	23
Figure 3.4	Airborne Radioactivity Material and Radiation Area Signs	24
Figure 3.5	Radiation Material Sign	25
Figure 3.6	Combined Radioactive Material and Radiation Area Signs	25
Figure 3.7	Radiation Material Labels and Tags	25
Table 3.1	Classification of Radionuclides According to Relative Radio. toxicity Per Unit Activity	28
Table 3.2	Radioisotope Facility Classification	29
Figure 5.1	Radiation Emergency Procedures	37
Figure 5.2	Notice to Employees	38
Figure 5.3	No Smoking, Eating, or Drinking Sign	39

Appendix A

University of Maryland Radiation Safety Office Radioactive Materials Order Form

Use this form to request the purchase of radioactive material using Departmental Purchasing Cards. Upon completion of this form, forward a copy to the Radiation Safety Office, Chemical & Nuclear Engineering, Room 2124, Building 090. You may (1) fax your form to our office using the fax# (301)-314-1487; (2) send a copy through campus mail; or (3) have someone hand deliver the order to our office. Your order will be placed by the Radiation Safety Office staff using the purchasing card number you indicate in the space provided.

(Please print)

Date	Name of Cardholder
UMD Purchasing Card Number	Expiration Date
Department Phone Number	Business Manager <u>Signature</u>

(Description of items)

Vendor Name	Catalog Number
Product Name	Activity (amount) _____ uCi _____ mCi
PI Name (print)	

The Radiation Safety Office will forward the invoice and packing list that comes with the product to the Business Manager of your department.

This request for radioactive material will **NOT** be processed without a proper signature and description of item. If you have any questions please contact the Radiation Safety Office staff at (301)-405-3985